

First they need to create a contact in Protractor and assign it with both < Parts Supplier > and < Supplier Connection > contact category.

Then go to Tools | Location | Parts Supplier Setup.

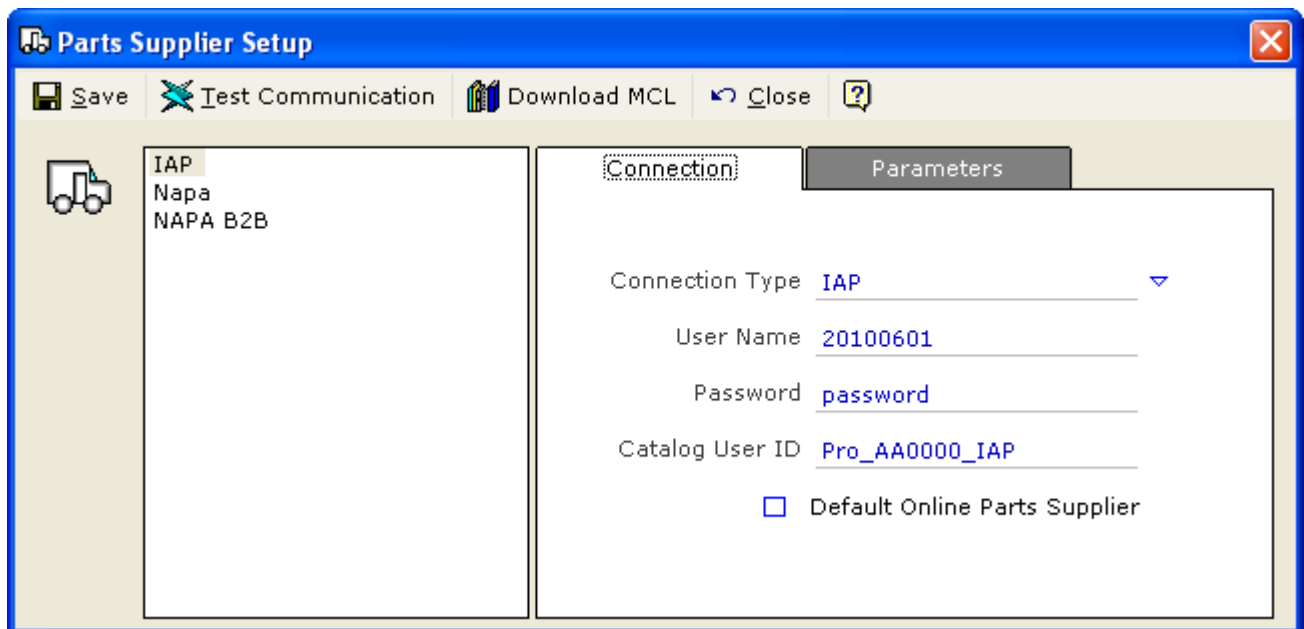
Click on the supplier just created, in this case the supplier is named "IAP".

Choose Connection Type of IAP.

Enter the user name and password here.

Enter the catalog user ID assigned by Protractor.

If this is your default supplier you can check the Default Online Parts Supplier check box.



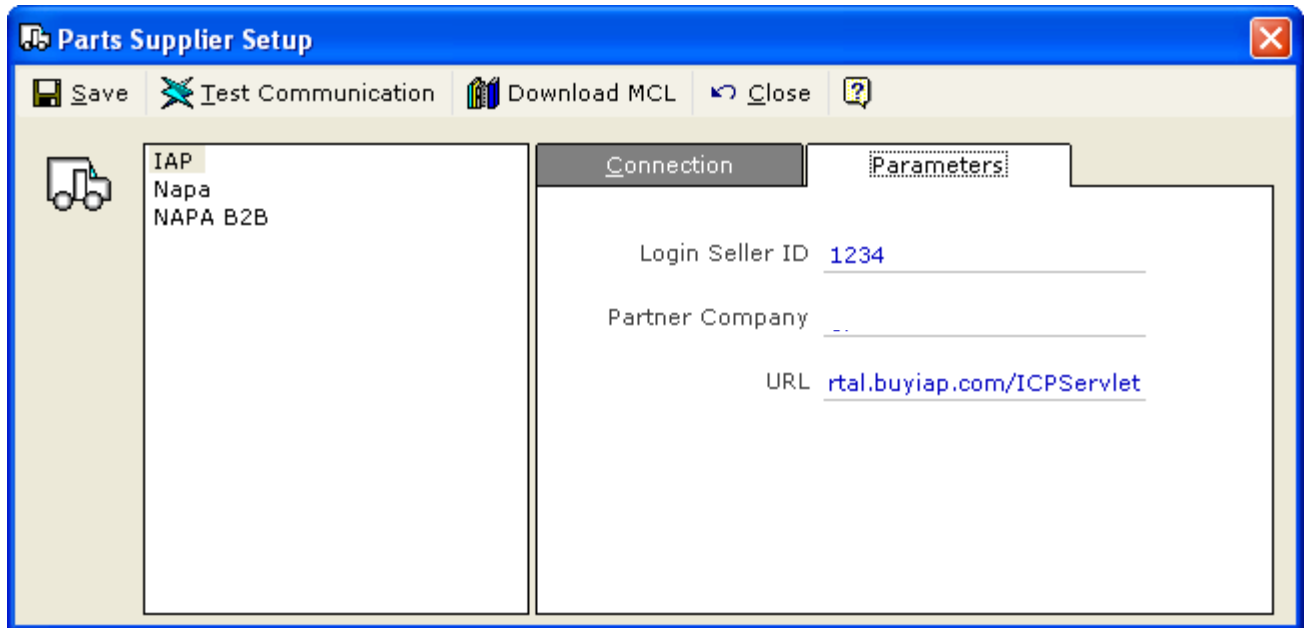
The screenshot shows a software window titled "Parts Supplier Setup" with a blue border. The window has a menu bar with "Save", "Test Communication", "Download MCL", "Close", and a help icon. On the left, there is a list of suppliers with a truck icon next to "IAP", which is selected. The main area is split into two tabs: "Connection" (active) and "Parameters". The "Parameters" tab contains the following fields:

- Connection Type: IAP (dropdown menu)
- User Name: 20100601
- Password: password
- Catalog User ID: Pro\_AA0000\_IAP
- Default Online Parts Supplier

Click on the Parameters tab.

Enter the Login Seller ID and Partner Company.

The URL is always <http://commportal.buyiap.com/ICPServlet>



Now you can hit Test Communication and it should succeed.

And then you can do Download MCL and it should download the MCL into the catalog user ID you have specified.

Hit save now and the IAP supplier setup is completed.